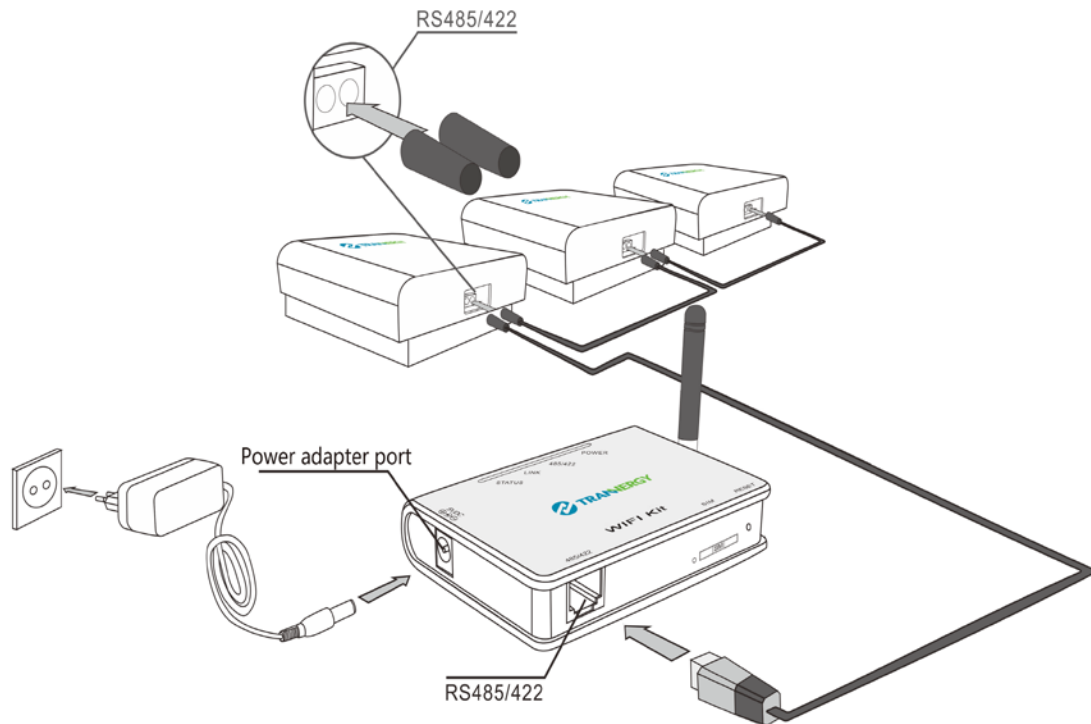


# User Manual



## Communication Module

**Trannector Card-Wifi / Trannector Card-GPRS / Trannector Card-Ethernet  
Trannector Box-Wifi&Ethernet / Trannector Box-GPRS**



## Contents

1. Profile .....	2
2. Trannector Card-Wifi User Manual .....	3
3. Trannector Card-GPRS User Manual.....	12
4. Trannector Card-Ethernet User Manual .....	15
5. Trannector Box-GPRS User Manual.....	18
6.Trannector Box-WiFi&Ethernet User Manual .....	22
7. Register and Login on monitoring website.....	35
Register.....	35
Login .....	37
8. Mobile Application.....	38
9. Contacts.....	39

## **1. Profile**

---

The manual describes the use of the Tranergy communication module , the communication module includes : Trannector Card-WIFI、Trannector Card-GPRS、Trannector Card-Ethernet、Trannector Box-GPRS、Trannector Box-WIFI&Ethernet. Manual introduces the installation and configuration with the communication module . It can help users correct use communication module.

## 2. Trannector Card-Wifi User Manual

---

### Description

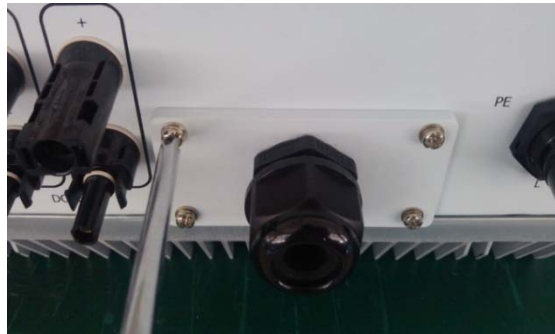
---

- 1 If user have installed wifi module, you can ignore step 1-3.
- 2 If user have not installed wifi module or replace wifi module, you can ignore step 4.

### Step 1. Disassembly

---

Make sure you switch off the input power and output power of the inverter so that there is no electricity in the inverter !



Remove communication panel from the inverter with the screwdriver as shown in above picture.

### Step2. Preparation

---

Find out the wifi module below. Write down the S/N number on the label of the wifi module as shown in following Picture, circled in red.

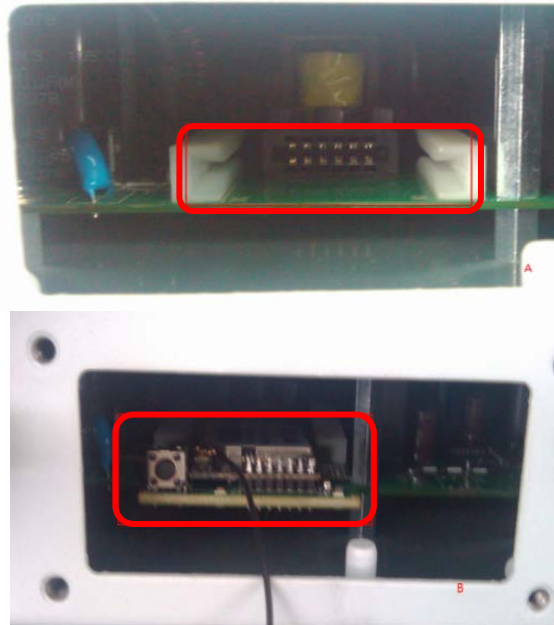


Plug the antenna into the socket circled in red in below Picture :



### **Step3. Installation**

Insert the tranconnector wifi module into the socket marked in red. Gently insert the wifi module until it fully and tightly contacts with the plug as shown in below Pictures.

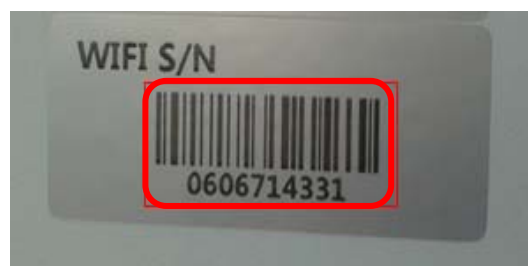


Screw the interface panel tight onto the inverter with a torque of 1.2N.m .  
Screw the water-proofing connector tight to fixate the antenna with a torque of 1.5N.m in a way that the antenna is properly mounted as shown in below picture:



### **Step 4. Write Down SN**

If the inverter have installed wifi module before the factory, Please check that the wifi serial number has been attached on the right side of the inverter and write it down.



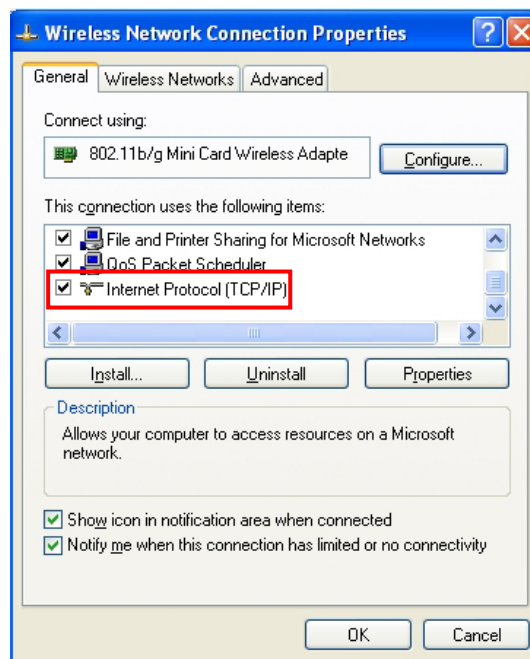
## Step 5. Wifi Module Configuration

The data logging module is embedded in the inverter. Users can start setting the network of the module once powering on the inverter.

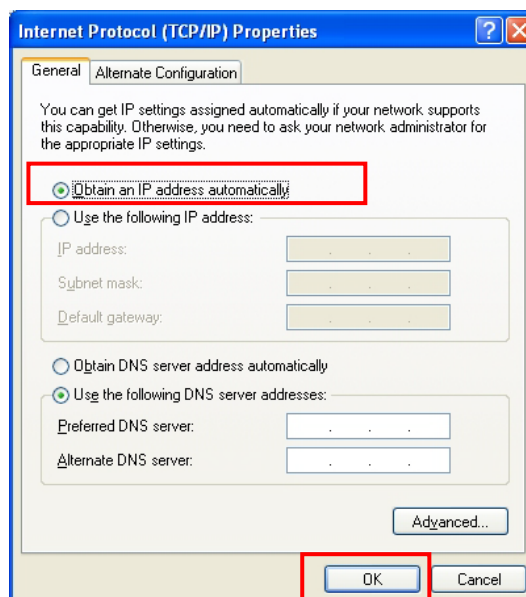
Notice: The setting hereinafter is operated with Windows XP for reference only. If other operating systems are used, please follow the corresponding procedures.

1. Prepare a computer or device, e.g. tablet PC and smartphone, that enables WiFi.
2. Obtain an IP address automatically

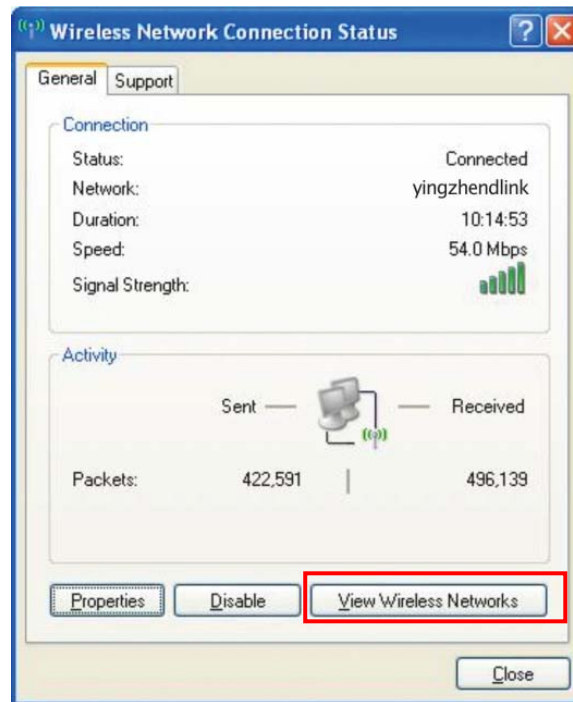
1) Open Wireless Network Connection Properties, double click Internet Protocol (TCP/IP)



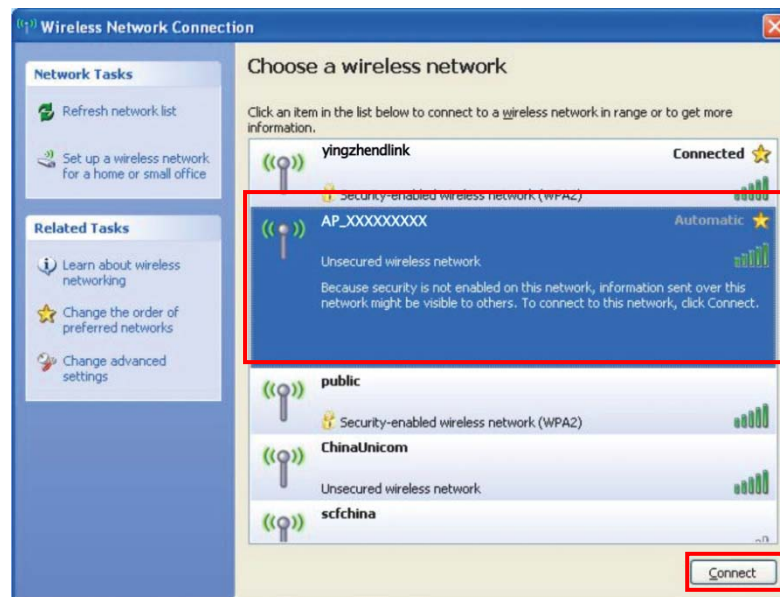
2) Select Obtain an IP address automatically, and click OK



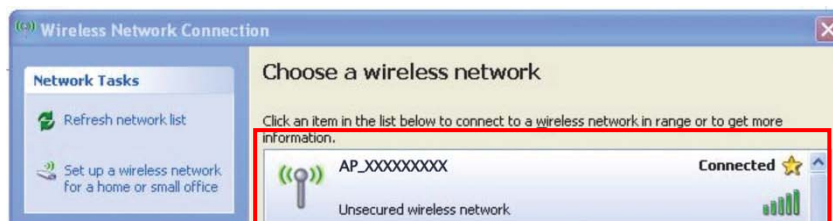
### 3) Set WiFi connection to the module



Open wireless network connection and click View Wireless Networks



Select wireless network of the data logging module, no passwords required as default. The network name consists of AP and the serial number of the product. Then click Connect.



*Notice:*

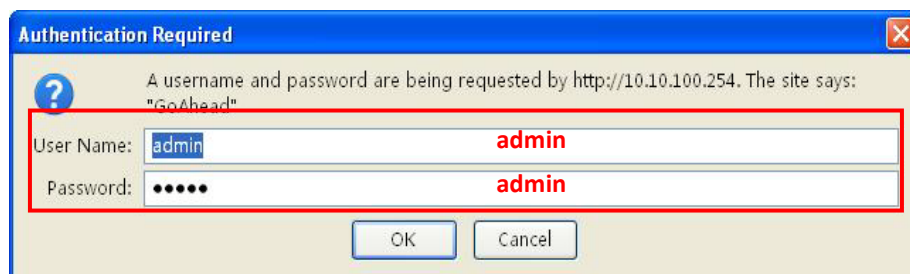
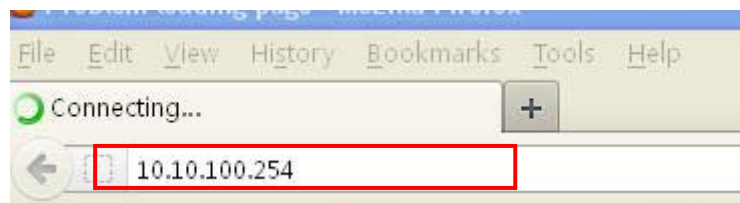
If AP\_(serial number of product) is not available in the wireless network list, there may be problems in the connection or setting of data logging module and need troubleshooting.

Before troubleshooting, please check with your inverter provider whether you are allowed to remove the cover on the inverter to trouble shoot the module. If not allowed, please contact customer service.

3. Set parameters of WiFi module

- (a) Open a web browser, and enter 10.10.100.254, then fill in username and password, both of which are admin as default.

Recommended browsers: Internet Explorer 8+, Google Chrome 15+, Firefox 10+



- (b) In the configuration interface of WiFi module, you can view general information of the module. Follow the setup wizard to start quick setting.



中文 | English

<ul style="list-style-type: none"> <li><b>Status</b></li> <li>Wizard</li> <li>Wireless</li> <li>Advanced</li> <li>Upgrade</li> <li>Restart</li> <li>Reset</li> </ul>	<p><b>▲ Inverter information</b></p> <table border="1"> <tr><td>Inverter serial number</td><td>PDL017KN14314009</td></tr> <tr><td>Firmware version (main)</td><td>---</td></tr> <tr><td>Firmware version (slave)</td><td>---</td></tr> <tr><td>Inverter model</td><td>---</td></tr> <tr><td>Rated power</td><td>---</td></tr> <tr><td><b>Current power</b></td><td><b>0 W</b></td></tr> <tr><td><b>Yield today</b></td><td><b>0 kWh</b></td></tr> <tr><td><b>Total yield</b></td><td><b>0 kWh</b></td></tr> <tr><td>Alerts</td><td>---</td></tr> <tr><td>Last updated</td><td>0 Min Ago</td></tr> </table> <p><b>▼ Device information</b></p> <p><b>▼ Remote server information</b></p>	Inverter serial number	PDL017KN14314009	Firmware version (main)	---	Firmware version (slave)	---	Inverter model	---	Rated power	---	<b>Current power</b>	<b>0 W</b>	<b>Yield today</b>	<b>0 kWh</b>	<b>Total yield</b>	<b>0 kWh</b>	Alerts	---	Last updated	0 Min Ago	<p><b>Help</b></p> <p>The device can be used as a wireless access point (AP mode) to facilitate users to configure the device, or it can also be used as a wireless information terminal (STA mode) to connect the remote server via wireless router.</p>
Inverter serial number	PDL017KN14314009																					
Firmware version (main)	---																					
Firmware version (slave)	---																					
Inverter model	---																					
Rated power	---																					
<b>Current power</b>	<b>0 W</b>																					
<b>Yield today</b>	<b>0 kWh</b>																					
<b>Total yield</b>	<b>0 kWh</b>																					
Alerts	---																					
Last updated	0 Min Ago																					

Click Wizard to start

中文 | English

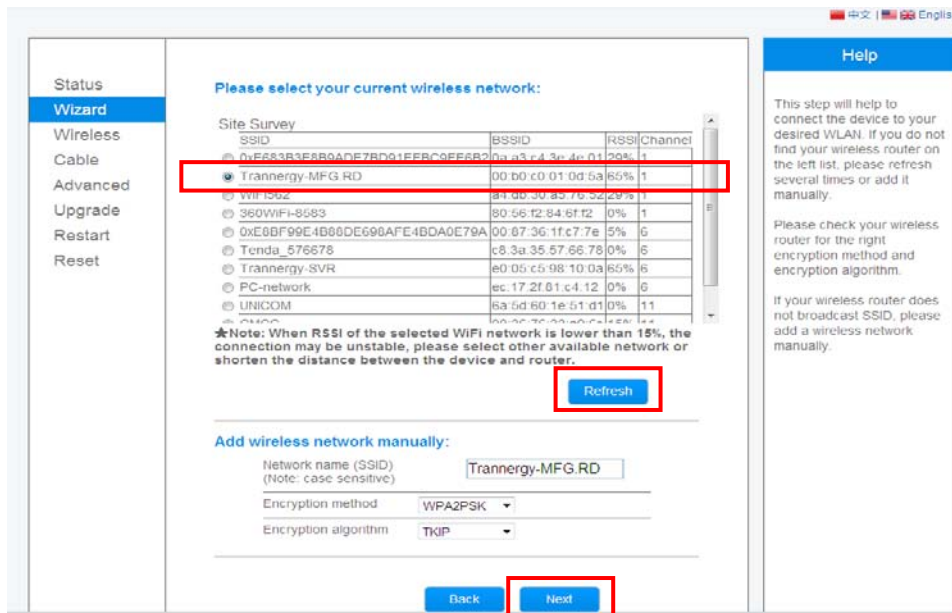
<ul style="list-style-type: none"> <li>Status</li> <li><b>Wizard</b></li> <li>Wireless</li> <li>Advanced</li> <li>Upgrade</li> <li>Restart</li> <li>Reset</li> </ul>	<p><b>Dear user:</b></p> <p>Thank you for choosing our device. Next, you can follow the setup wizard to complete the network setting step by step, or you can select the left menu for detailed setting.</p> <p>★Note: Before setting, please make sure that your wireless network is working.</p> <p style="text-align: right;"><b>Start</b></p> <p style="text-align: center;"> <span style="border-bottom: 1px solid black; width: 100px; display: inline-block; margin-right: 5px;">1</span> <span style="border-bottom: 1px solid black; width: 100px; display: inline-block; margin-right: 5px;">2</span> <span style="border-bottom: 1px solid black; width: 100px; display: inline-block; margin-right: 5px;">3</span> <span style="border-bottom: 1px solid black; width: 100px; display: inline-block; margin-right: 5px;">4</span> <span style="border-bottom: 1px solid black; width: 100px; display: inline-block; margin-right: 5px;">5</span> <span style="border-bottom: 1px solid black; width: 100px; display: inline-block;">6</span> </p>	<p><b>Help</b></p> <p>The setup wizard will assist you to complete the device setting within one minute.</p>
--	---	--

Click Start to continue

中文 | English

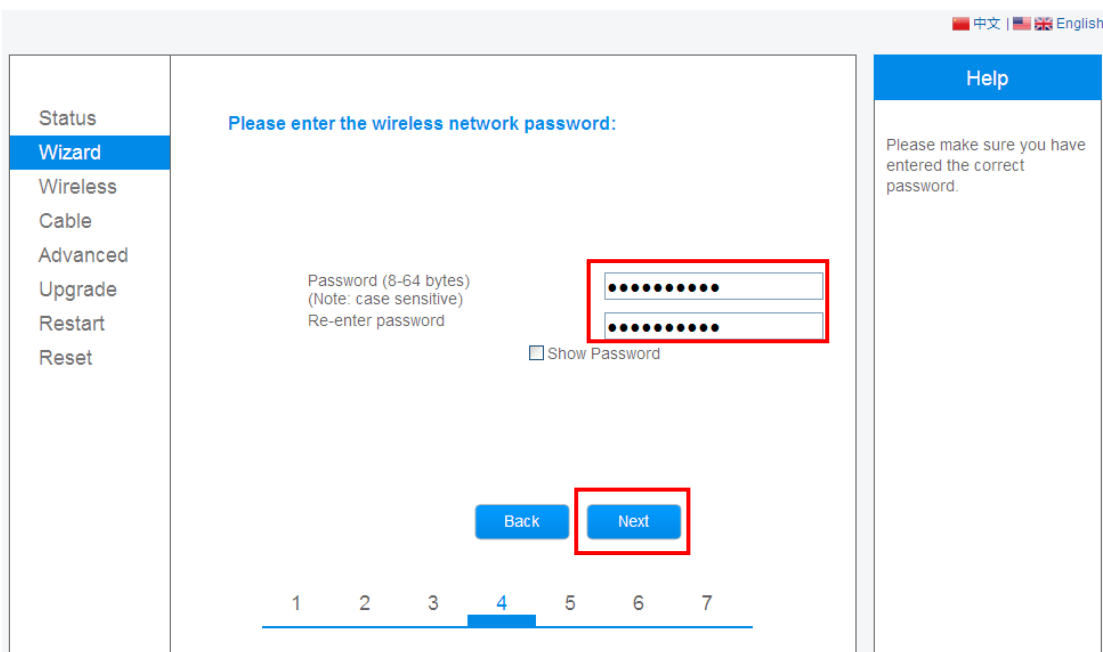
<ul style="list-style-type: none"> <li>Status</li> <li><b>Wizard</b></li> <li>Wireless</li> <li>Cable</li> <li>Advanced</li> <li>Upgrade</li> <li>Restart</li> <li>Reset</li> </ul>	<p><b>Connection Settings:</b></p> <p> <input checked="" type="radio"/> <b>Wireless connection</b> <input type="radio"/> Cable connection         </p> <p style="text-align: right;">Wireless: Enabled</p> <p style="text-align: center;"> <span>Back</span> <span style="margin-left: 20px;"><b>Next</b></span> </p> <p style="text-align: center;"> <span style="border-bottom: 1px solid black; width: 100px; display: inline-block; margin-right: 5px;">1</span> <span style="border-bottom: 1px solid black; width: 100px; display: inline-block; margin-right: 5px;">2</span> <span style="border-bottom: 1px solid black; width: 100px; display: inline-block; margin-right: 5px;">3</span> <span style="border-bottom: 1px solid black; width: 100px; display: inline-block; margin-right: 5px;">4</span> <span style="border-bottom: 1px solid black; width: 100px; display: inline-block; margin-right: 5px;">5</span> <span style="border-bottom: 1px solid black; width: 100px; display: inline-block; margin-right: 5px;">6</span> <span style="border-bottom: 1px solid black; width: 100px; display: inline-block;">7</span> </p>	<p><b>Help</b></p> <p>The STA mode of wireless connection will be turned off by system automatically when you choose cable network connection.</p> <p>Whether to keep the AP mode of wireless connection or not can be set by turning on or off the wireless function.</p>
---	--	--

Select the wireless connection , and then click Next



Select the wireless network you need to connect, then click Next

Notice: If the signal strength (RSSI) of the selected network is <15%, which means unstable connection, please adjust the antenna of the router, or use a repeater to enhance the signal.



Enter the password for the selected network, then click Next

Notice: The password is being verified, please wait for a while. If you have entered a invalid password or encryption method, the prompt page will display.

中文 | English

Status

**Wizard**

Wireless

Cable

Advanced

Upgrade

Restart

Reset

**Please fill in the following information:**

Obtain an IP address automatically **Enable**

IP address 0.0.0.0

Subnet mask 0.0.0.0

Gateway address 0.0.0.0

DNS server address

Back Next

1 2 3 4 5 6 7

**Help**

Most systems support the function of DHCP to obtain IP address automatically. Please select disable and add it manually if your router does not support such function.

Select Enable to obtain an IP address automatically, then click Next

中文 | English

Status

**Wizard**

Wireless

Cable

Advanced

Upgrade

Restart

Reset

**Enhance Security**

You can enhance your system security by choosing the following methods

Hide AP

Change the encryption mode for AP

Change the user name and password for Web server

Back Next

1 2 3 4 5 6 7

**Help**

**Hide AP**  
The SSID of the AP network will be invisible if you hide the AP. Please enter the SSID manually when you need to connect to AP next time.

**Change the encryption mode for AP**  
If you set password for the AP network, you will need to enter the password to connect to AP.

**Change the user name and password for Web server**  
If you change the username and password for the web server, you will need to enter the new username and password to get access to the setting page.

Click Next

中文 | English

Status

**Wizard**

Wireless

Cable

Advanced

Upgrade

Restart

Reset

**Setting complete!**

Click OK, the settings will take effect and the system will restart immediately.

If you leave this interface without clicking OK, the settings will be ineffective.

Back OK

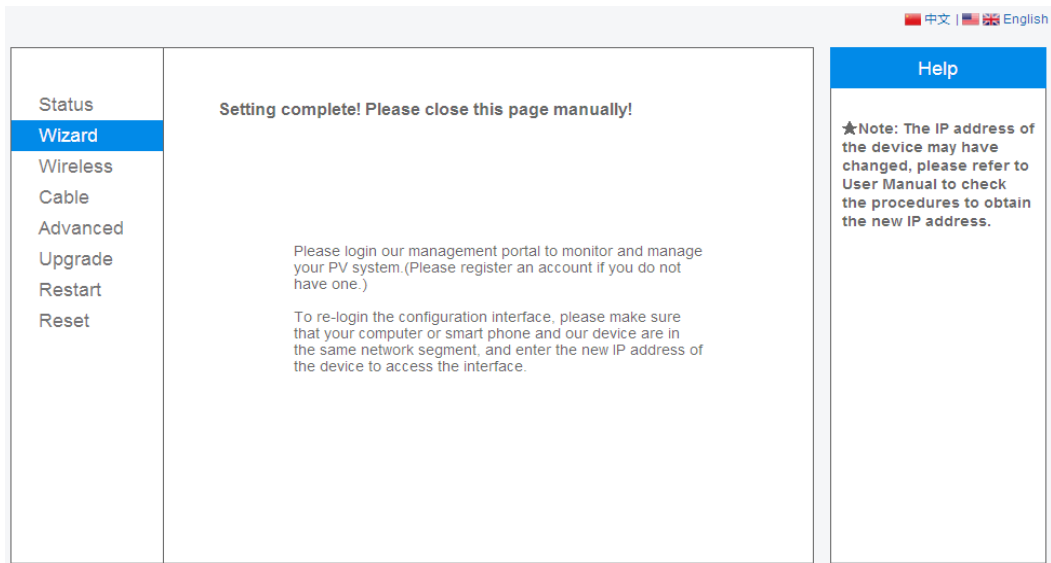
1 2 3 4 5 6 7

**Help**

After clicking OK, the system will restart immediately.



If setting is successful, the above page will display. Click OK to restart.



If restart is successful, the above page will display.

## **Step 6. Monitoring System**

Use monitoring systems, please refer to Chapter 7 (page 35) and Chapter 8 (page 38)

### **3. Trannector Card-GPRS User Manual**

---

#### **Description**

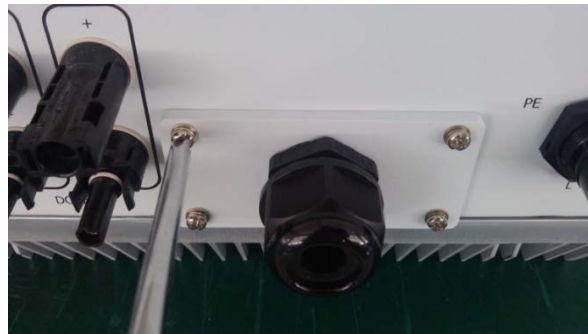
---

- 1 If user have installed GPRS module , you can ignore step 1-3.
- 2 If user have not installed GPRS module or replace GPRS module, you can ignore step 4.

#### **Step 1. Disassembly**

---

(1)Make sure you switch off the input power and output power of the inverter so that there is no electricity in the inverter !



Remove communication panel from the inverter with the screwdriver as shown in above Picture.

#### **Step 2. Preparation**

---

Find out the GPRS module below. It might be installed in the inverter or packaged separately with the inverter.

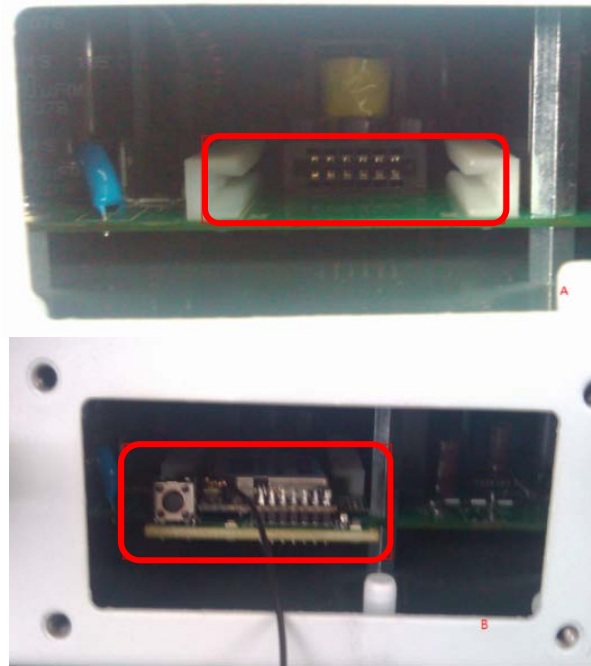
Write down the S/N number on the label of the GPRS module as shown in below Picture , circled in red.



#### **Step 3. Installation**

---

(1) Insert the GPRS module into the socket marked in red. Gently insert the GPRS module until it fully and tightly contacts with the plug as shown in below Pictures.



- (2) Plug the antenna into the cover and Screw the interface panel tight onto the inverter with a torque of 1.2N.m .



#### **Step 4. Write down Ethernet SN**

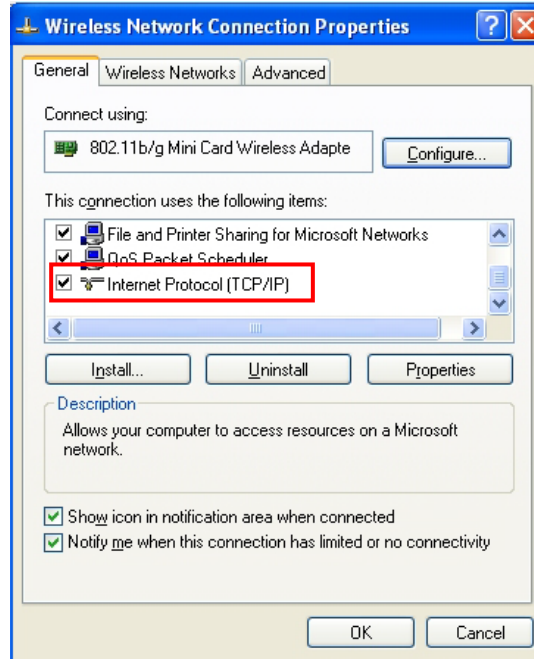
Check that the GPRS serial number has been attached on the right side of the inverter and write it down.

#### **Step 5. Network configuration**

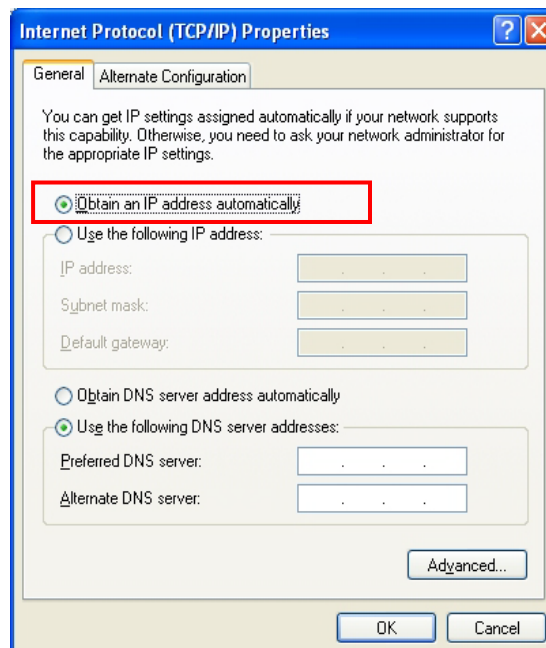
The data logging module is embedded in the inverter. Users can start setting the network of the module once powering on the inverter.

Notice: The setting hereinafter is operated with Windows XP for reference only. If other operating systems are used, please follow the corresponding procedures.

1. Prepare a computer or device, e.g. tablet PC and smartphone.
2. Obtain an IP address automatically
  - 1) Open Wireless Network Connection Properties, double click Internet Protocol (TCP/IP)



- 2) Select Obtain an IP address automatically, and click OK



## **Step 6. Monitoring System**

Use monitoring systems, please refer to chapter 7(page 35) and chapter 8. (page 38)

## 4. Trannector Card-Ethernet User Manual

---

### Description

---

- 1 If user have installed Ethernet module , you can ignore step 1-3.
- 2 If user have not installed Ethernet module or replace Ethernet module, you can ignore step 4.

### Step 1. Disassembly

---

(1)Make sure you switch off the input power and output power of the inverter so that there is no electricity in the inverter !



Remove communication panel from the inverter with the screwdriver as shown in above Picture.

### Step 2. Preparation

---

Find out the Ethernet module below. It might be installed in the inverter or packaged separately with the inverter.

Write down the S/N number on the label of the Ethernet module as shown in below Picture , circled in red.

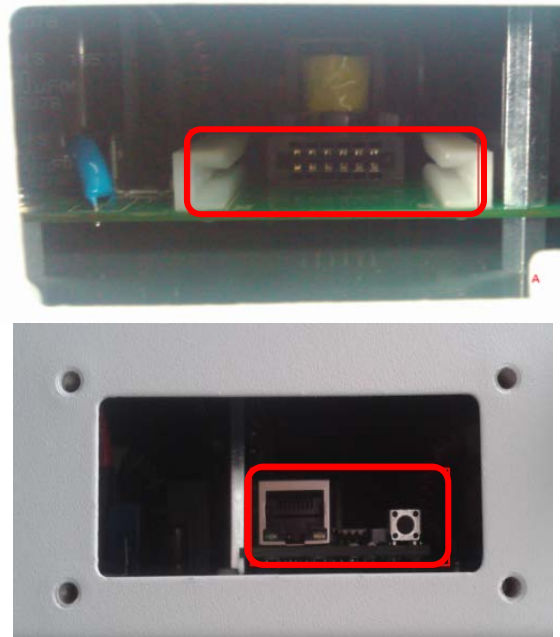


### Step 3. Installation

---

(1)Insert the Ethernet module into the socket marked in red. Gently insert the Ethernet module until it fully and tightly contacts with the plug as shown in below Pictures.





(2) Network cable access cover and Screw the interface panel tight onto the inverter with a torque of 1.2N.m .



#### **Step 4. Write Down Ethernet SN**

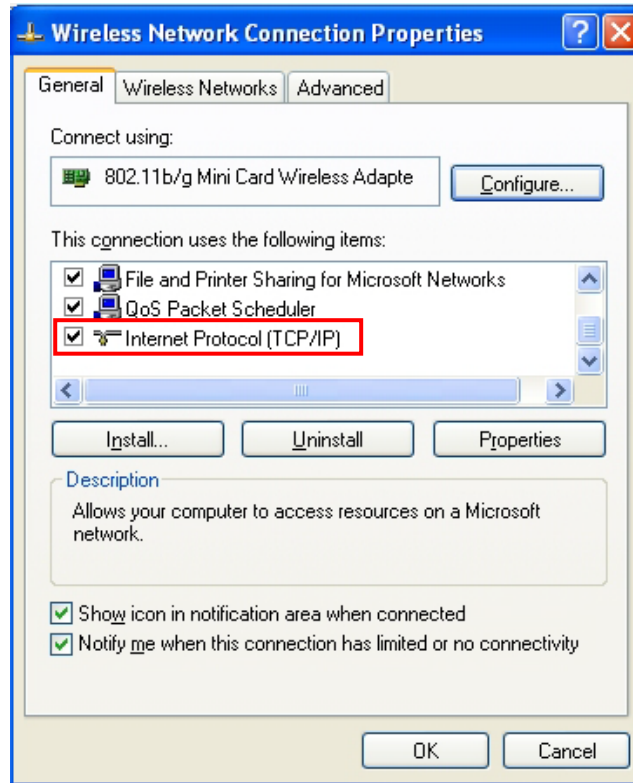
Check that the Ethernet serial number has been attached on the right side of the inverter and write it down.

#### **Step 5. Network Configuration**

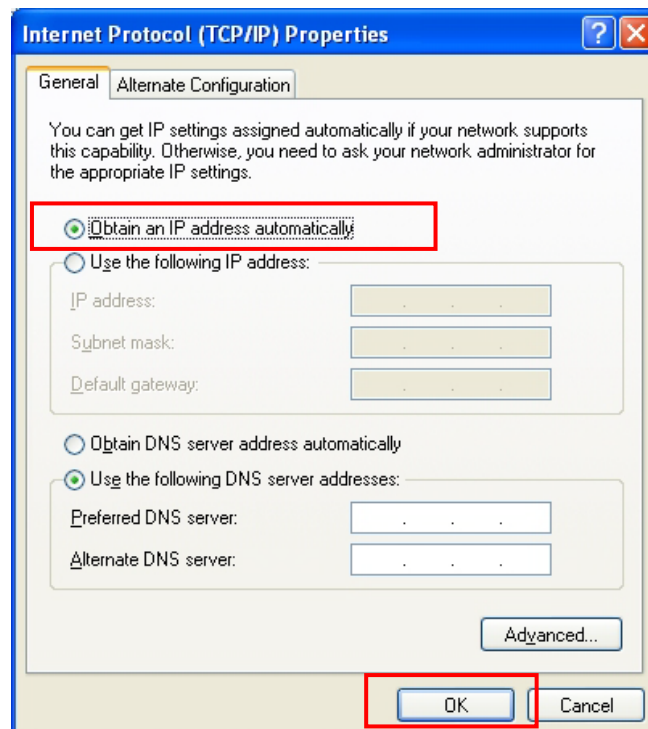
The data logging module is embedded in the inverter. Users can start setting the network of the module once powering on the inverter.

Notice: The setting hereinafter is operated with Windows XP for reference only. If other operating systems are used, please follow the corresponding procedures.

1. Prepare a computer or device, e.g. tablet PC and smart phone.
2. Obtain an IP address automatically
  - 1) Open Wireless Network Connection Properties, double click Internet Protocol (TCP/IP).



2) Select Obtain an IP address automatically, and click OK



## Step 6. Monitoring System

---

Use monitoring systems, please refer to Chapter 7 (page 35) and Chapter 8(page 38)

## 5. Trannector Box-GPRS User Manual

---

### Step 1. Disassembly

---

(1) Make sure you switch off the input power and output power of the inverter so that there is no electricity in the inverter !



Remove communication panel from the inverter with the screwdriver as shown in above Picture.

### Step 2. Preparation

---

1. Open the box, you can see in the following figure accessories.



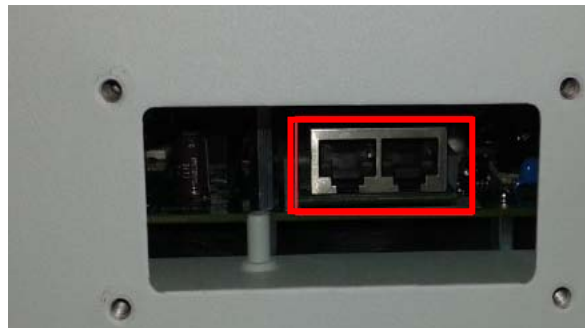
2. Find out the GPRS box below. Write down the S/N number on the label of the GPRS box as shown in following Picture, circled in red.



### Step 3. Installation

---

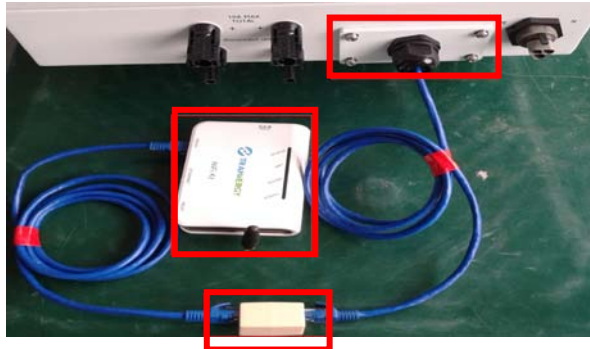
1. Insert the trannector RS485/422 module into the socket marked in red. Gently insert the RS485/422 module until it fully and tightly contacts with the plug as shown in below Pictures.



2. Network cable through GPRS cover and plug in RS485/422 module, Screw the interface panel tight onto the inverter with a torque of 1.2N.m . The other end of the network cable into RJ45 straight head(422 label affixed). as shown in below Pictures.



3. Network cable plug in RJ45 straight head(WiFi label affixed),the other end of network cable plug in the 485/422 port of GPRS box. as shown in below Pictures.



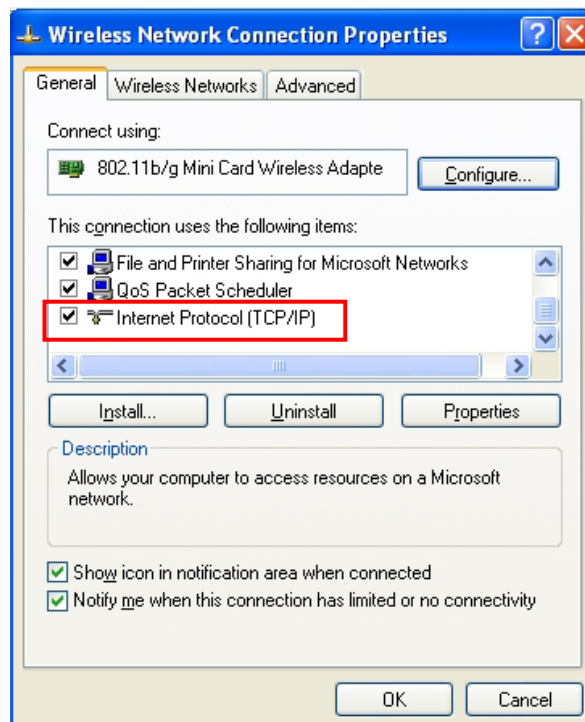
4. Open the inverter and the power supply to GPRS box, check the 4 LEDs , If POWER and STATUS are permanently on, and LINK and 485/422 are permanently on or flashing, connections are successful.

### **Step 4. Network Configuration**

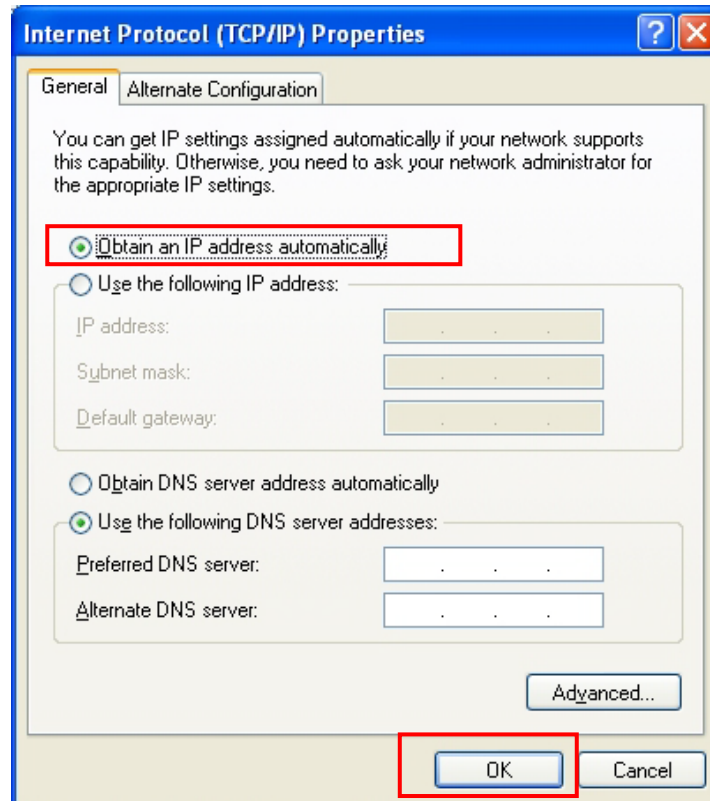
The data logging module is embedded in the inverter. Users can start setting the network of the module once powering on the inverter.

Notice: The setting hereinafter is operated with Windows XP for reference only. If other operating systems are used, please follow the corresponding procedures.

1. Prepare a computer or device, e.g. tablet PC and smart phone.
2. Obtain an IP address automatically
  - 1) Open Wireless Network Connection Properties, double click Internet Protocol (TCP/IP)



- 2) Select Obtain an IP address automatically, and click OK



## **Step 5. Monitoring System**

---

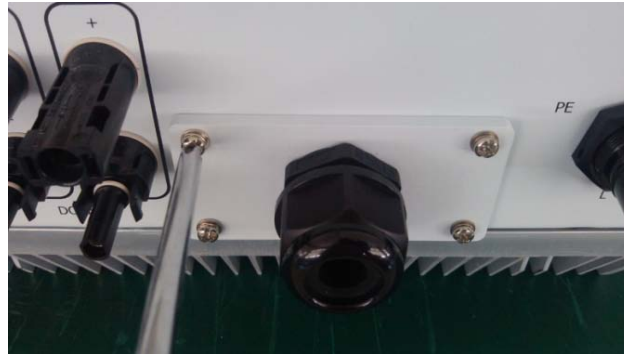
Use monitoring systems, please refer to Chapter 7(page 35) and Chapter 8(page 38).



## 6. Trannector Box-WiFi&Ethernet User Manual

### Step 1. Disassembly

Make sure you switch off the input power and output power of the inverter so that there is no electricity in the inverter !



Remove communication panel from the inverter with the screwdriver as shown in above picture.

### Step 2. Preparation

1. Open the box, you can see in the following figure accessories.



- 2 . Find out the WiFi &Ethernet box below. Write down the S/N number on the label of the WiFi &Ethernet box as shown in following Picture, circled in red.



### **Step 3. Installation**

---

1. Insert the tranconnector RS485/422 module into the socket marked in red. Gently insert the RS485/422 module until it fully and tightly contacts with the plug as shown in below Pictures.



2. Network cable through Wifi&Ethernet cover and plug in RS485/422 module, Screw the interface panel tight onto the inverter with a torque of 1.2N.m . The other end of the network cable into RJ45 straight head(422 label affixed). as shown in below Pictures.





3. Network cable plug in RJ45 straight head(WiFi label affixed),the other end of network cable plug in the RS485/422 port of Wifi&Ethernet box. as shown in below Pictures.



4. Open the inverter and the power supply to Wifi&Ethernet box, check the 4 LEDs , If POWER and STATUS are permanently on, and LINK and 485/422 are permanently on or flashing, connections are successful.

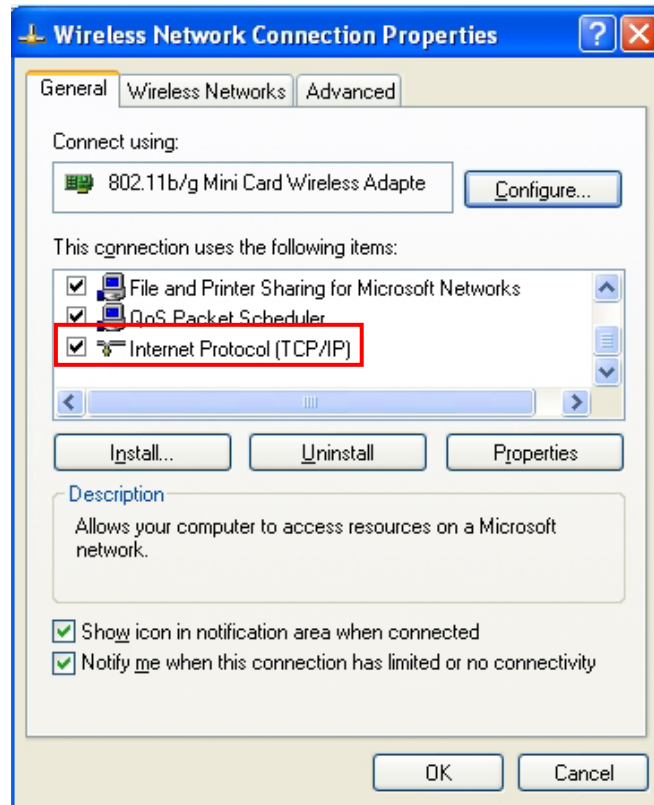
## **Step 4. Wifi&Ethernet Module Configuration**

The box can transfer information via either WiFi or Ethernet, users may choose the appropriate method accordingly.

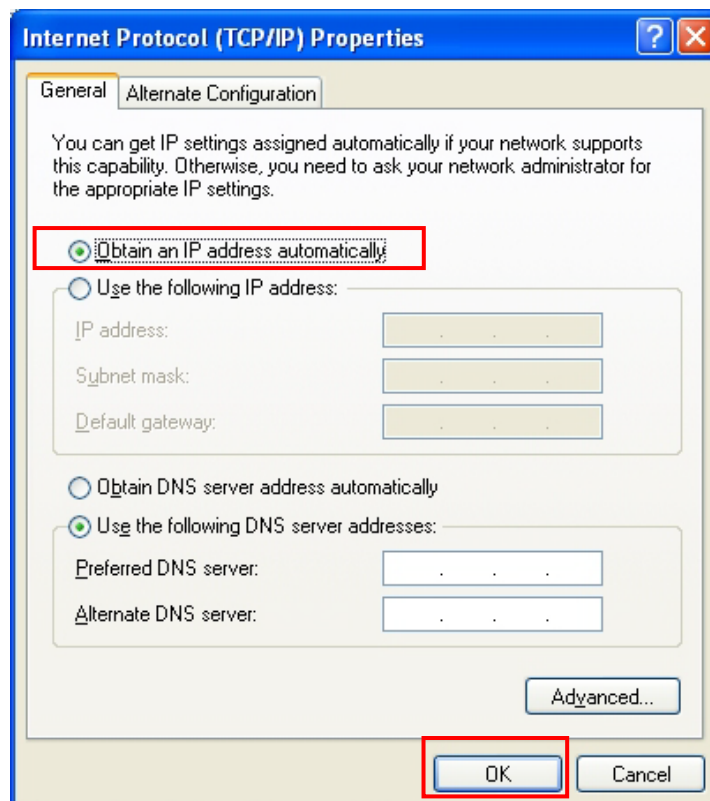
### **I. Connection via WiFi**

Notice: The setting hereinafter is operated with Window XP for reference only. If other operating systems are used, please follow the corresponding procedures.

1. Prepare a computer or device with WiFi.
2. Set network connection of computer
  - 1) Open Wireless Network Connection Properties, double click Internet Protocol (TCP/IP)

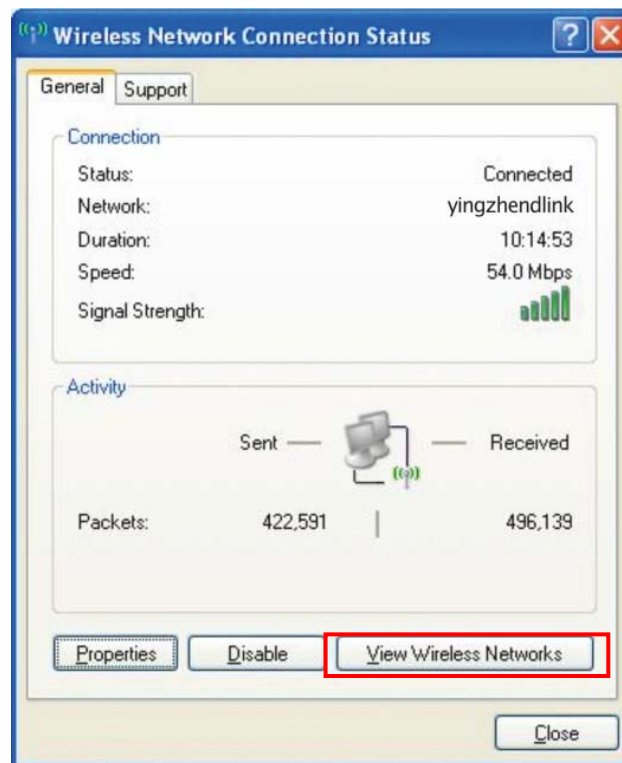


2) Select Obtain an IP address automatically, and click OK

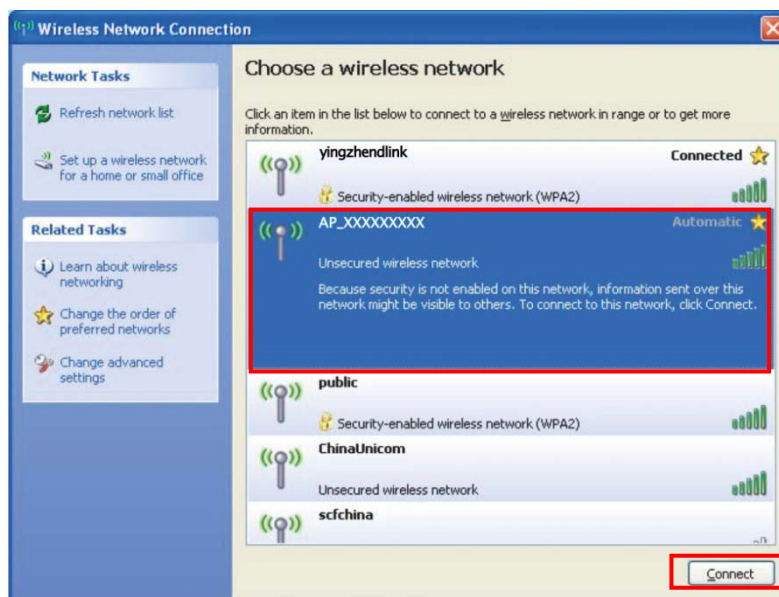


### 3. Set WiFi connection to the module

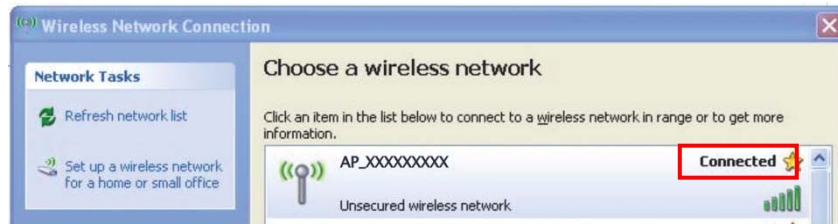
- 1) Open wireless network connection and click View Wireless Networks



- 2) Select wireless network of the data logging module, no passwords required as default. The network name consists of **AP** and the **serial number of the product**. Then click **Connect**.



- 3) Connection successful

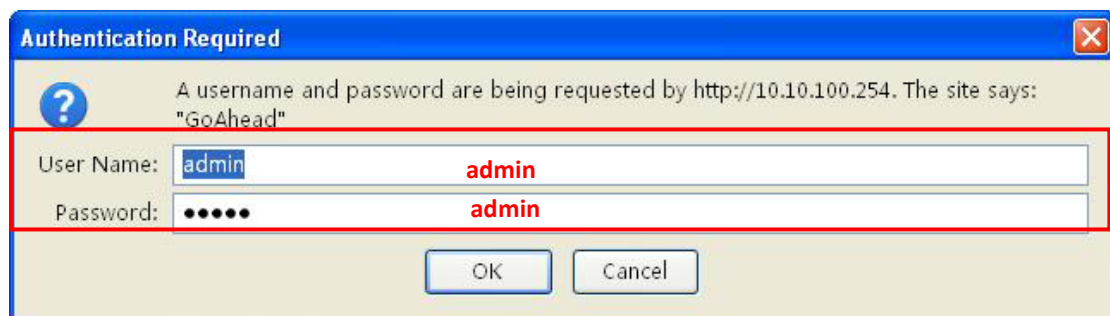
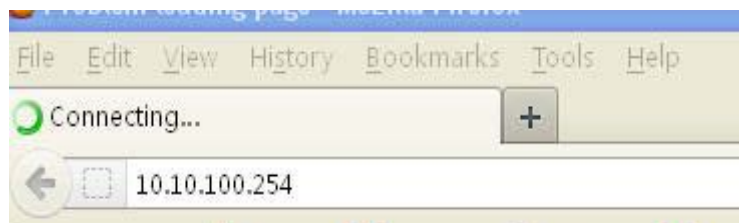


Notice: If AP\_(serial number of product) is not available in the wireless network list, there may be problems in the connection or setting of data logging module.

#### 4. Set parameters of Wifi&Ethernet module

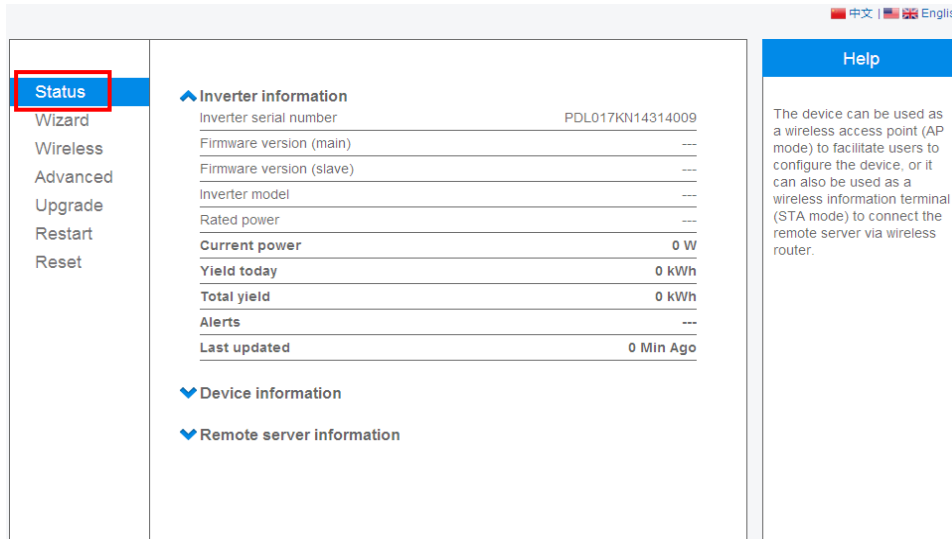
- 1) Open a web browser, and enter **10.10.100.254**, then fill in username and password, both of which are **admin** as default.

Recommended browsers: Internet Explorer 8+, Google Chrome 15+, Firefox 10+

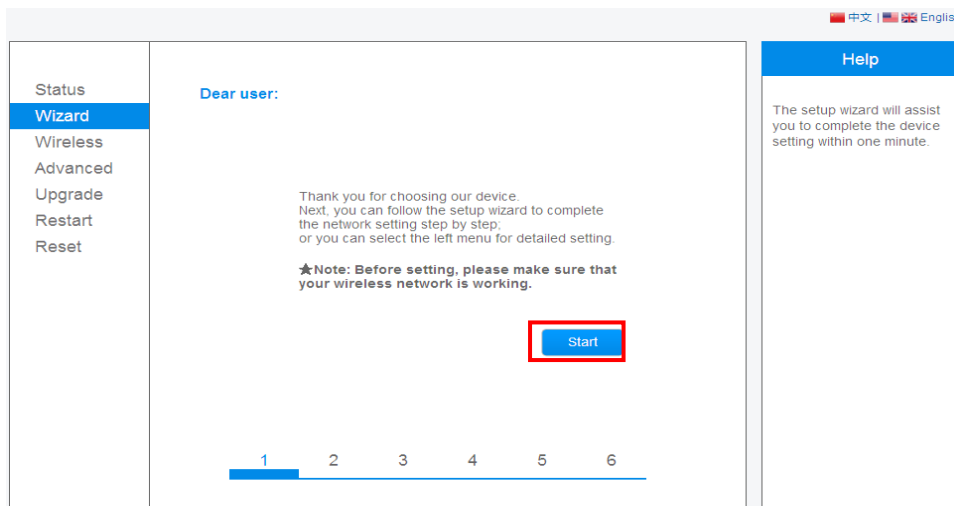


- 2) In the configuration interface of WiFi module, you can view general information of the module. Follow the setup wizard to start quick setting.

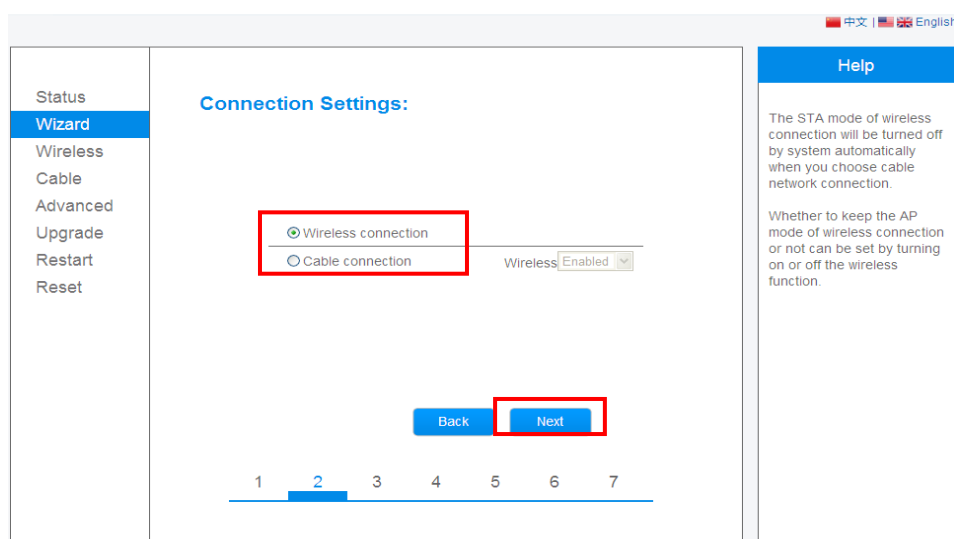
(a) Click **Wizard** to start



(b) Click Start to continue

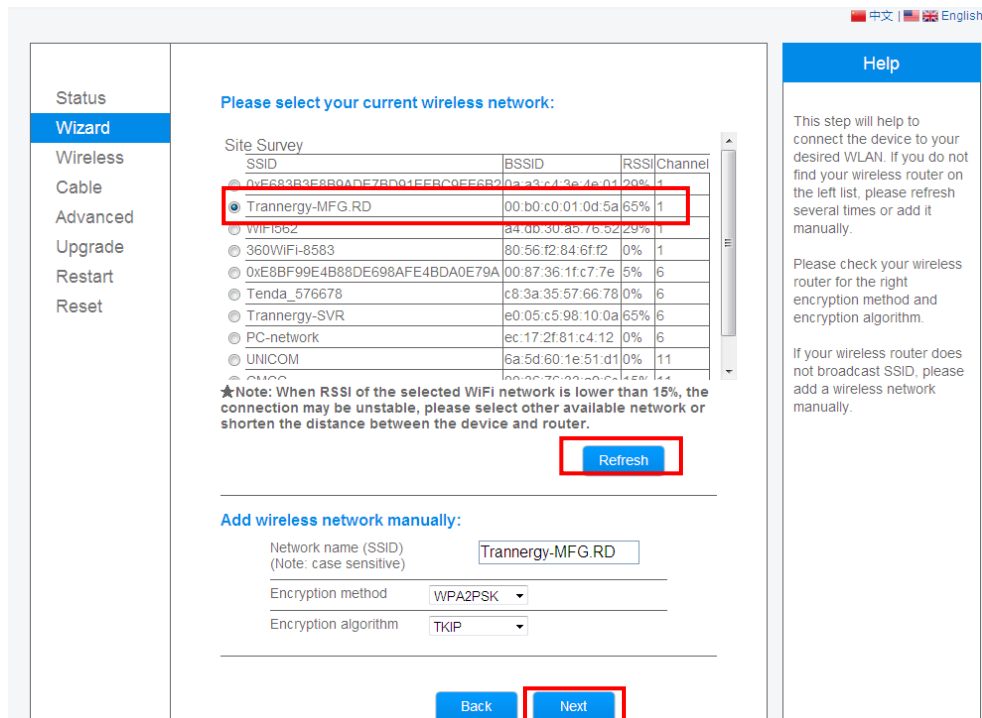


(c) Select Wireless connection or cable connection, and click Next



Note: if you use wifi to module ,please choose wifi connecton, if you use Ethernet to module, please choose cable connection.

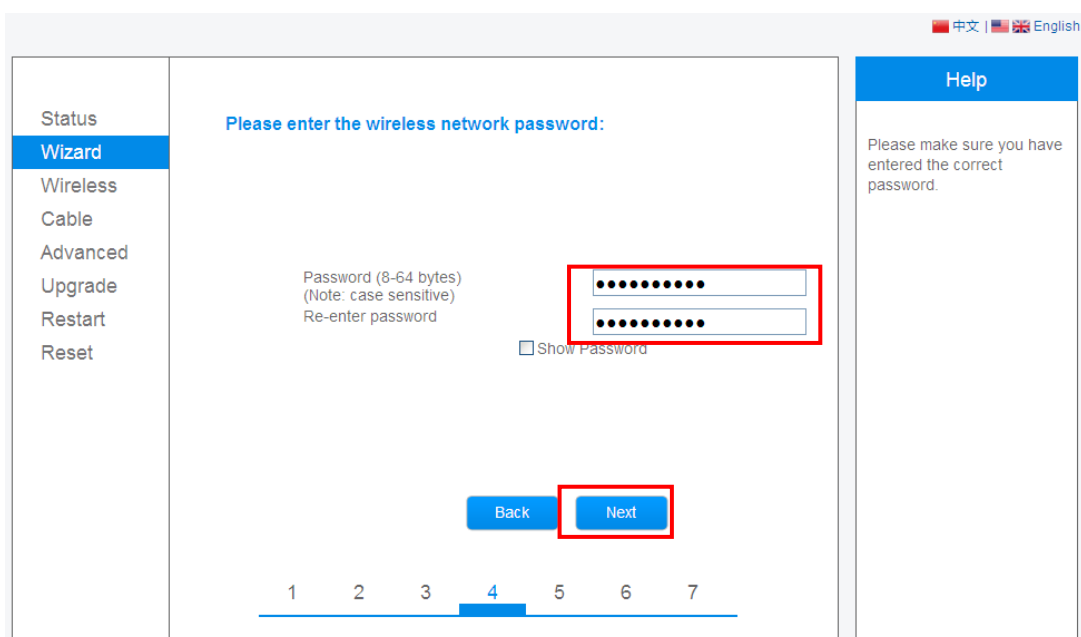
(d) Click Refresh to search available wireless networks and Select the wireless network you need to connect, then click Next



Notice: If the signal strength (RSSI) of the selected network is <15%, which means unstable connection, please adjust the antenna of the router, or use a repeater to enhance the signal.

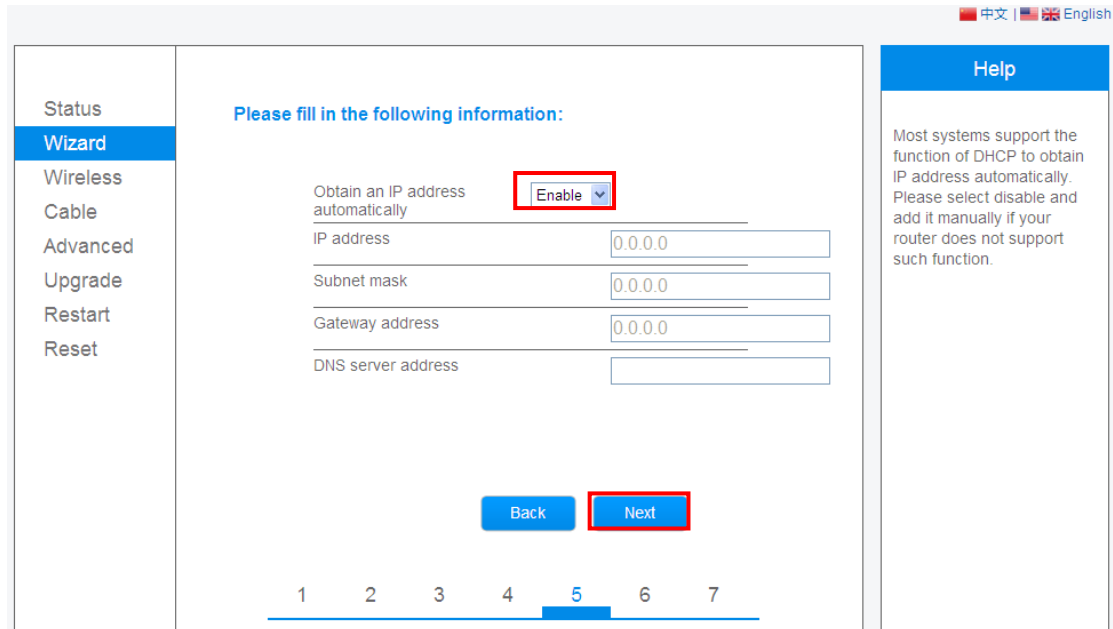
The SSID of your selected router network should be less than 30 characters, in which '&', '#', '%', and blank space should not be included.

(e) Enter the password for the selected network, then click Next



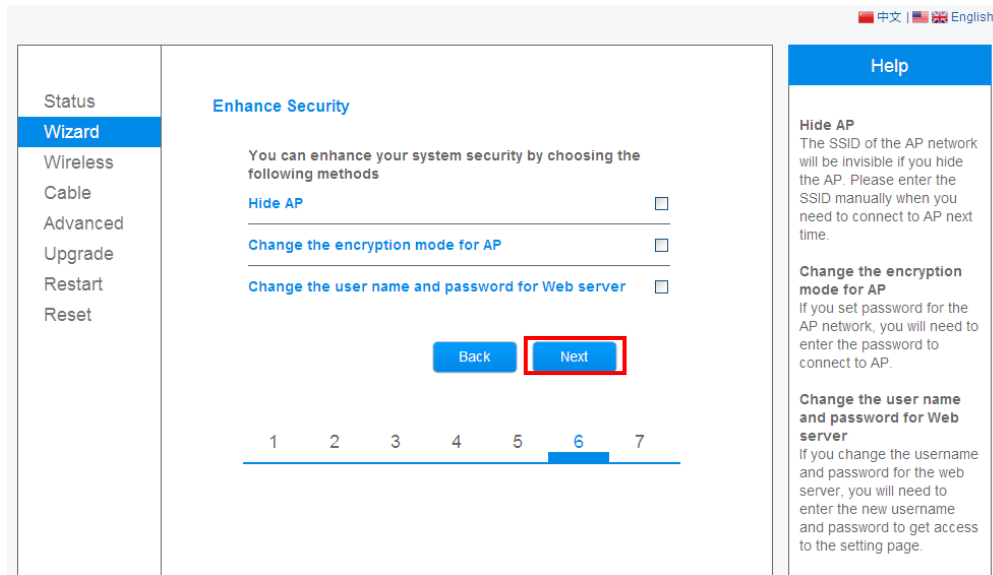
Router password cannot be recognized if it contains any character such as '&', '#', '%', and blank space.

(f) Select Enable to obtain an IP address automatically, then click Next



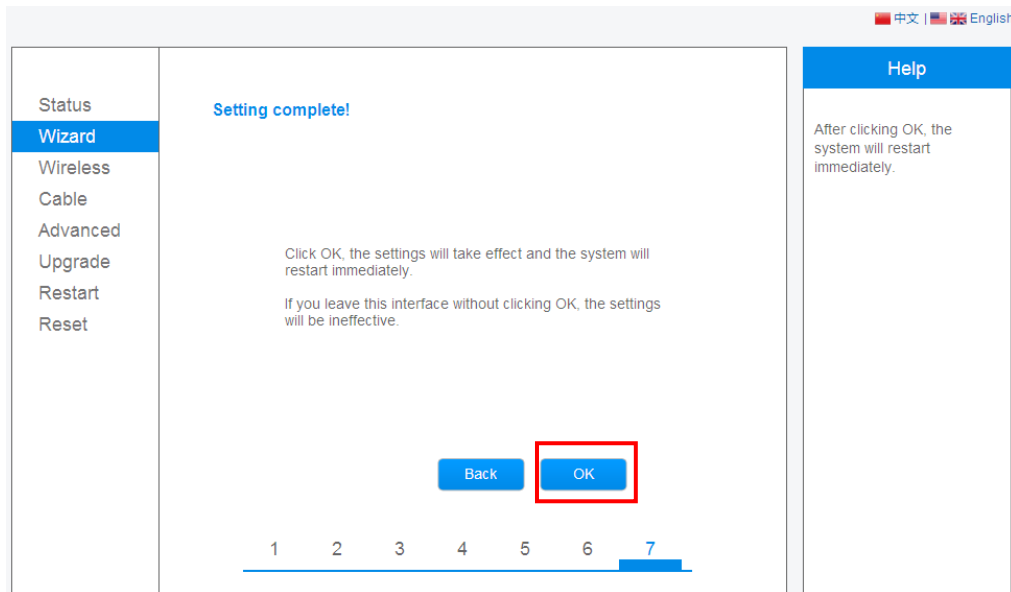
Router configuration wizard, step 5. The page title is "Please fill in the following information:". The "Obtain an IP address automatically" dropdown menu is set to "Enable". The "Next" button is highlighted with a red box. The progress bar at the bottom shows step 5 is active.

(g) Click Next to continue.

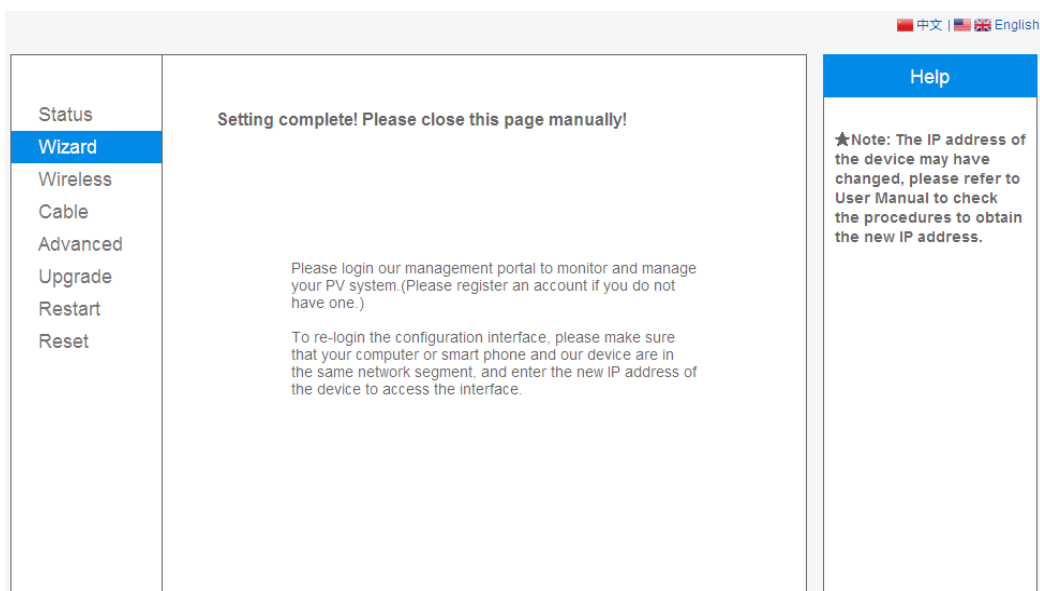


Router configuration wizard, step 6. The page title is "Enhance Security". The "You can enhance your system security by choosing the following methods" section has three options: "Hide AP", "Change the encryption mode for AP", and "Change the user name and password for Web server", all with unchecked checkboxes. The "Next" button is highlighted with a red box. The progress bar at the bottom shows step 6 is active.

(h) If setting is successful, the above page will display. Click OK to restart.



(i) If restart is successful, the above page will display.



## II. Connection via Ethernet

1. Connect computer and data logger via Ethernet port with network cable.
2. Reset the data logger.

Reset: Press the reset button with a needle or open paper clip and hold for a while when the 4 LEDs should be on. Reset is successful when 3 LEDs, except POWER, turn off.

3. Enter the configuration interface of your router, and check the IP address of the data logger assigned by the router. Open a web browser and enter the assigned IP address to get access to the configuration interface of the data logger. Fill in



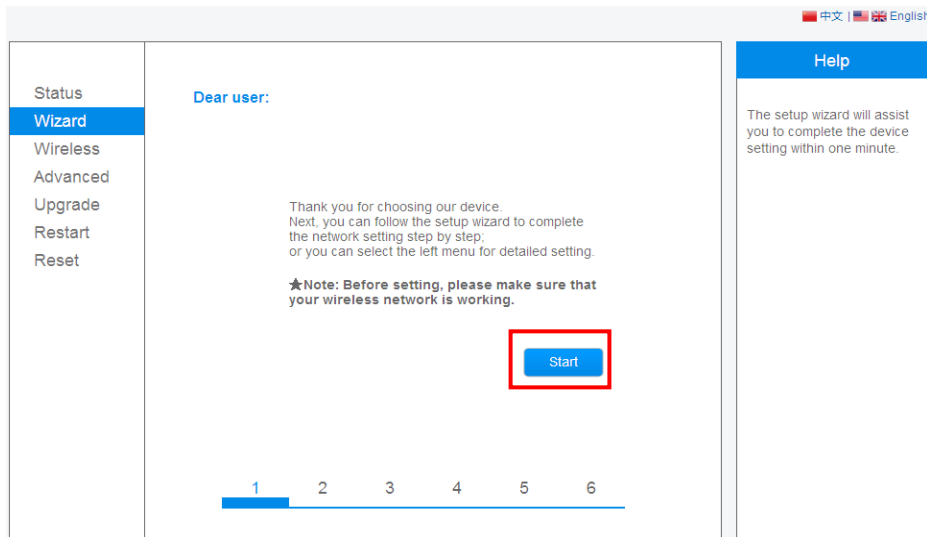
username and password, both of which are admin as default.

Recommended browsers: Internet Explorer 8+, Google Chrome 15+, Firefox 10+

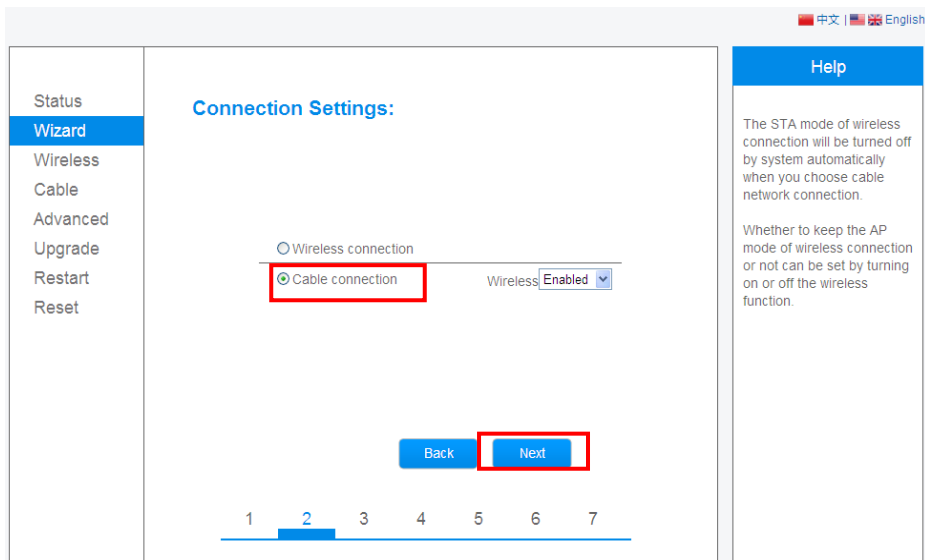
#### 4. Set network to the module

In the configuration interface of data logger, you can view general information of the device. Follow the setup wizard to start quick setting.

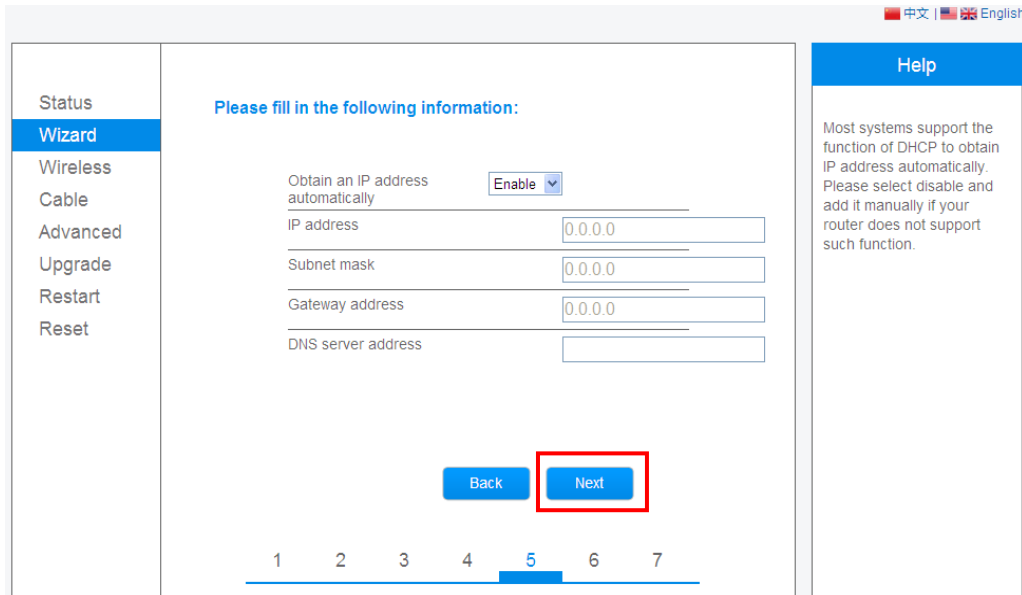
(a) Click **Wizard** to start and Click **Start** to continue



(b) Select Cable Connection, and you can choose to enable or disable the wireless function, then click Next



(c) click Next to continue



中文 | English

Status

Wizard

Wireless

Cable

Advanced

Upgrade

Restart

Reset

Please fill in the following information:

Obtain an IP address automatically

IP address

Subnet mask

Gateway address

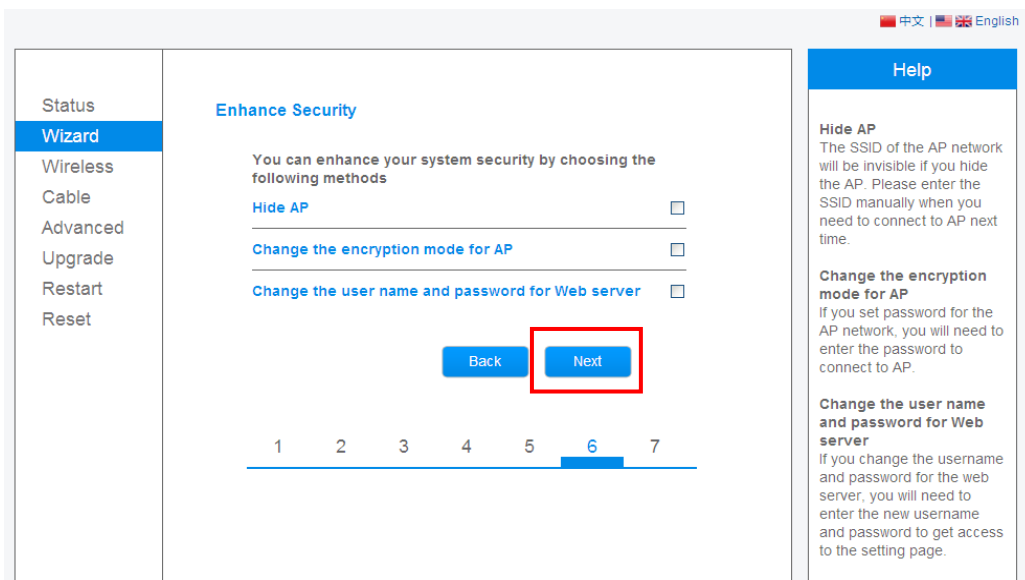
DNS server address

1 2 3 4 5 6 7

Help

Most systems support the function of DHCP to obtain IP address automatically. Please select disable and add it manually if your router does not support such function.

(d) Click Next to continue



中文 | English

Status

Wizard

Wireless

Cable

Advanced

Upgrade

Restart

Reset

Enhance Security

You can enhance your system security by choosing the following methods

Hide AP

Change the encryption mode for AP

Change the user name and password for Web server

1 2 3 4 5 6 7

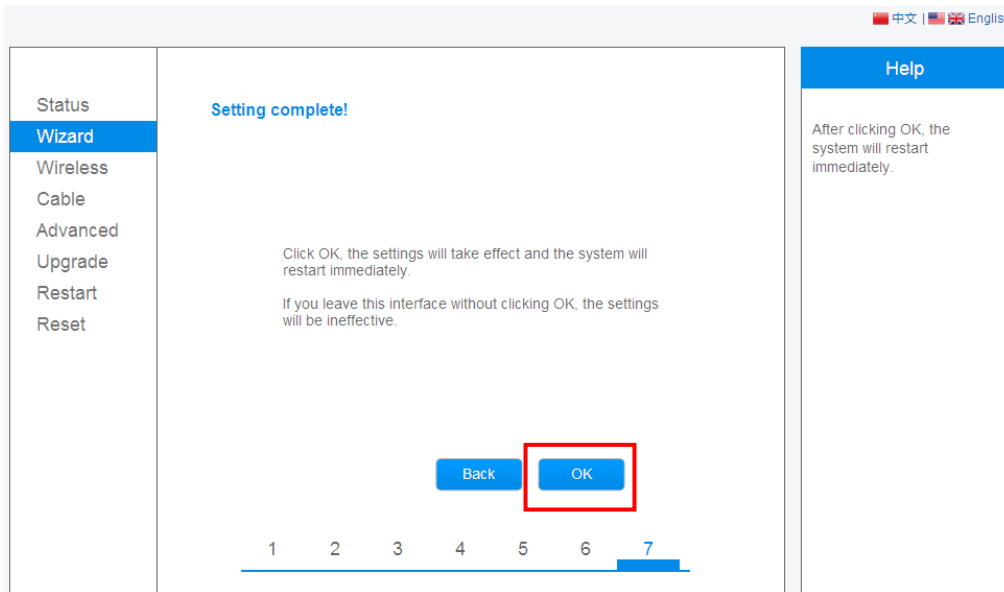
Help

**Hide AP**  
The SSID of the AP network will be invisible if you hide the AP. Please enter the SSID manually when you need to connect to AP next time.

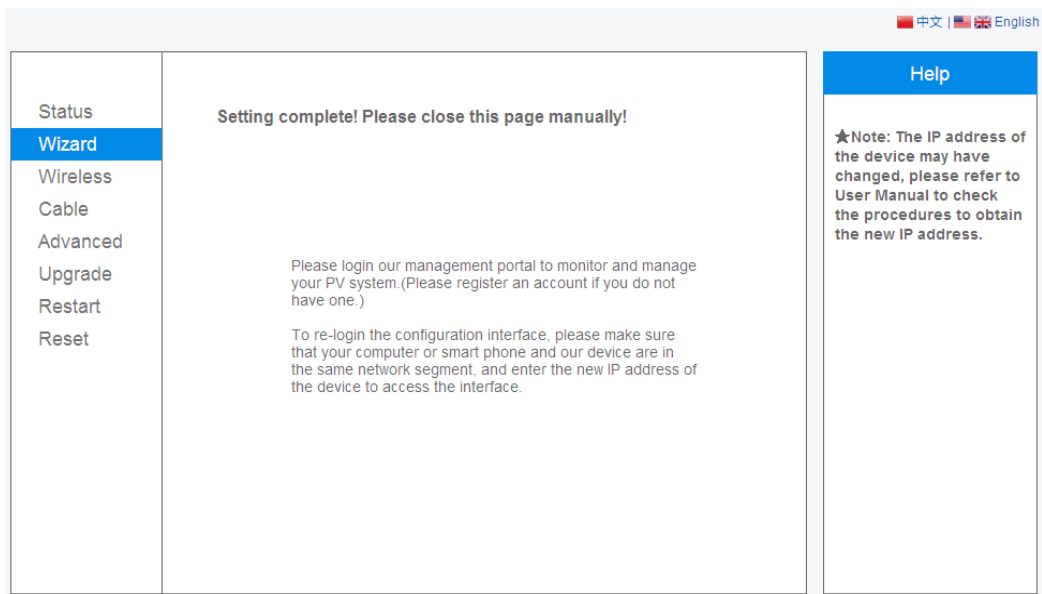
**Change the encryption mode for AP**  
If you set password for the AP network, you will need to enter the password to connect to AP.

**Change the user name and password for Web server**  
If you change the username and password for the web server, you will need to enter the new username and password to get access to the setting page.

(e) If setting is successful, the following page will display. Click OK to restart.



(f) If restart is successful, the following page will display.



Notice: After setting is completed, if **STATUS** is permanently on after about 30 seconds, and the 4 LEDs are all on after 2-5 minutes, the connection is successful. If **STATUS** is flashing, which means unsuccessful connection, please repeat the setting.

## **Step 5. Monitoring System**

Use monitoring systems, please refer to Chapter 7(page 35) and Chapter 8(page 38).



## 7. Register and Login on monitoring website

### Register

Open a web browser and visit the portal website: <http://log.tranergy.com/>.

**Supported browsers: Internet Explorer 8+, Google Chrome 10+, Firefox 9+, Safari 4+**



Click Register Now



Fill in your email address and password, then click Next


中文 | English | Spanish | Thai | Český | Portuguese

**TRANERGY**

**Create a New Account**

Site Name  \*Maximum 20 Letters

Upload Image



Country  \*

Province/State  \*

City  \*

Street  [Locate Your Site On Map](#)

ZIP Code

Timezone

Number Format

Temperature Unit

System Size(kWp)  \*

Feed-In Tariff(FIT)   \*

Panel Type

Inverter Type

Description

Make This Site Public

---

**Registration**

Datalogger S/N  \*

Installer

---

**Contact**

Name

Phone

---

**Data Forwarding**

PVOutPut

API Key  [Get The Key](#)

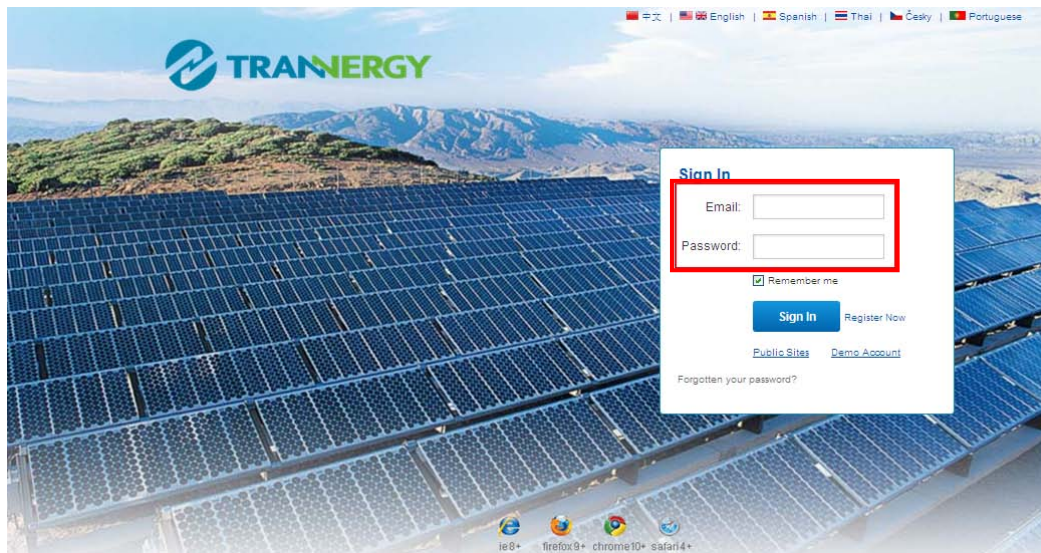
System ID  [Get The ID](#)

Fill in the information as required (Datalogger S/N fill in wifi s/n), then click Complete



## Login

After successful registration, open the login page of Tranergy Portal (<http://log.tranergy.com/>), and input your E-mail and password to access the monitoring system and start monitoring and management of power plants.



Notice: If users access the monitoring system for the first time within ten minutes after successful registration, please check the "Real Time" interface . If there are data shown in the Real Time interface, network setting of data logger and other connection are deemed successful.

Home
My Site
Public Sites
Account

▼

Overview
Real Time
History
Alert
Report
Settings

☀ 12/25 Sunny 40-51↑ | 
 ☀ 12/26 Sunny 30-49↑ | 
 ☀ 12/27 Sunny 33-40↑
 
⚠ Alerts : 0 Items

⏪ ⏩ Page 1 of 1 ⏴ ⏵

No.	Inverter S/N	DC Input			AC Output				Total Energy(kWh)	Temperature	
		Channel	Voltage(V)	Current(A)	Phase	Voltage(V)	Current(A)	Power(W)			Frequency(Hz)
1	PDL4000120708004	PV1	271.7	0.0	L1	222.3	0.5	0	50.05	191.6	25.5
		PV2	271.6	0.0	L2	0.0	0.0	0			
		PV3	0.0	0.0	L3	0.0	0.0	0			

## 8. Mobile Application

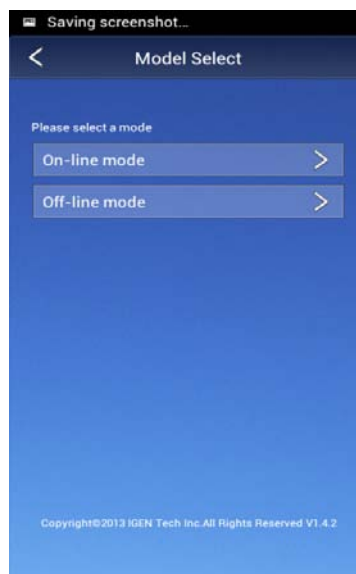
At Apple's and Android's app store, you can input the key words: Trannergy-log, then you can download and install the Trannergy-log to your Mobile equipment.

After downloaded, install and launch it.

1.



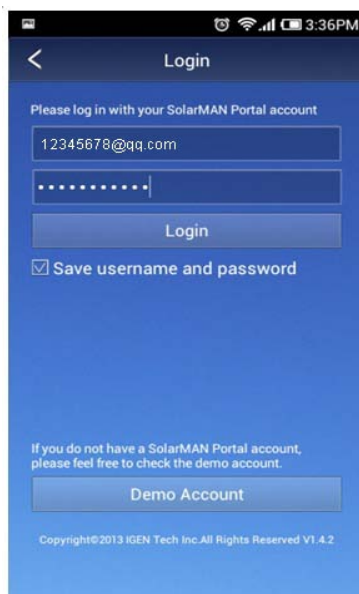
2.



We can select On-line mode and Off-line mode.

On-line mode need to connect to the internet.

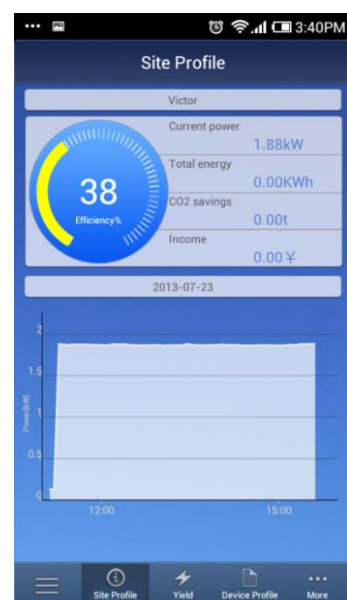
1.



2.



3.

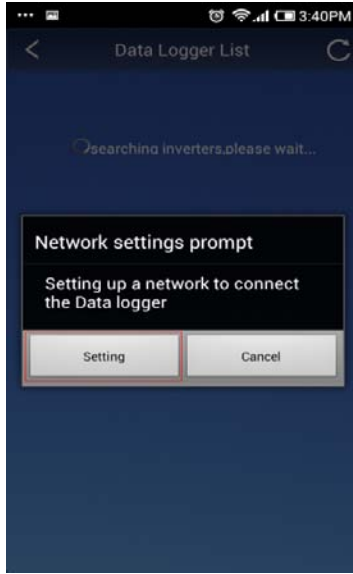






Off-line mode need to connect to the Trannector Wifi Module's network.

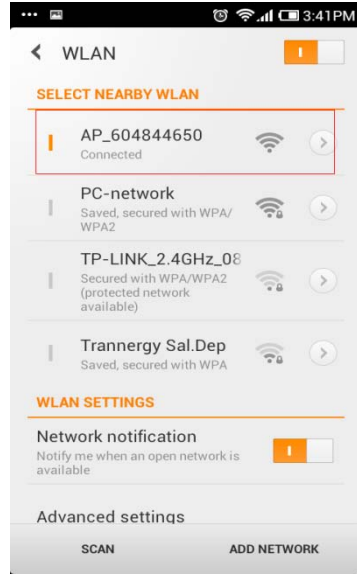
1.



2.



3.



## 9. Contacts

---

If you have any question about Trannector Communication Module, please contact us.

Tranergy Co., Ltd.

[www.tranergy.com](http://www.tranergy.com)

Add: No.188, Weiwu Road, Jiading District, Shanghai, China, 201802

Tel: +86 21 38953908

Fax: +86 21 38953905

E-mail: [info@tranergy.com](mailto:info@tranergy.com)